

Rebuilding the Commons

A place for Inspiring Change



A place for connecting



A place for gathering



A place for learning



A place for playing

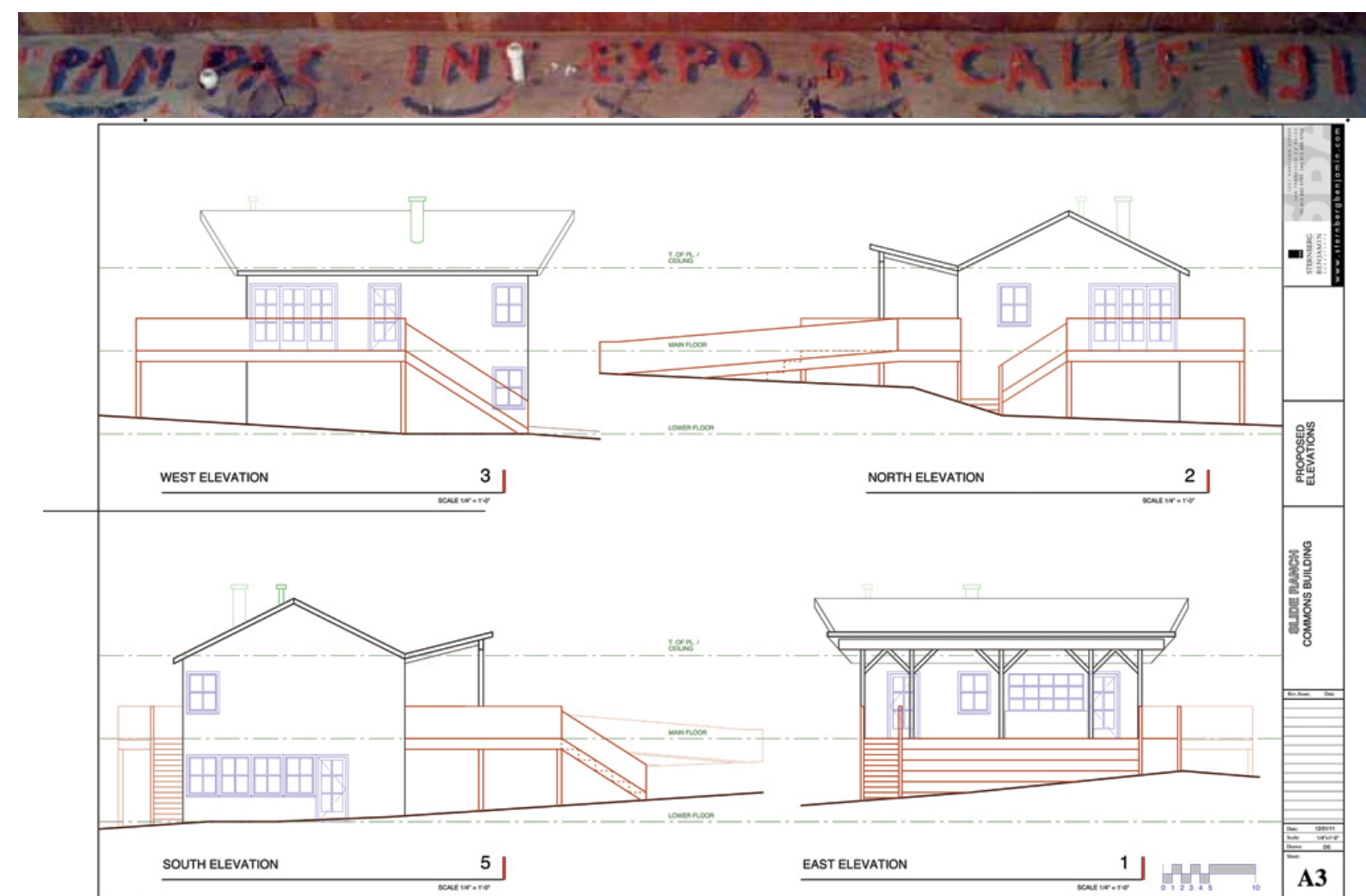
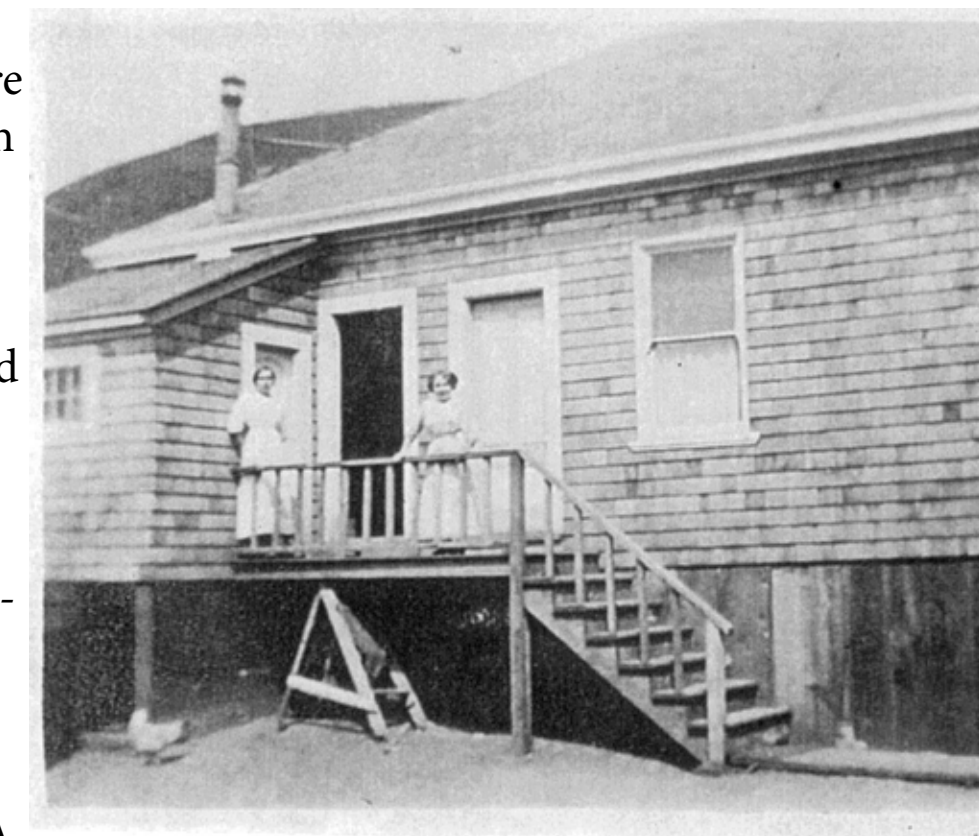
The idea of the commons can include many things - forests, atmosphere, water, fisheries or grazing land - that are shared, used and enjoyed by all. At Slide Ranch, the Commons building is a place that is shared by the people who live and work here to prepare and eat meals. It is also the central platform that supports our experiential learning program. The Commons both a functional space and a symbol of sharing resources.

Built in 1916 by immigrant cattle ranchers from the Azore Islands with lumber salvaged from the 1915 Panama Pacific International Exposition (photo below shows hand-lettering on one of the floor joists), the Commons farmhouse has been ravaged by weather, termites and decades of wear and tear. Work will include a new 12" concrete slab foundation, sheer walls, and reconfiguration of the space to better serve Slide Ranch.

The new Commons will feature a **new demonstration cooking area** along the garden side of the building so groups can gather for cooking sessions. Cooking food helps children learn more about their connection with healthy food.

New ground-level educational space will provide hands-on learning opportunities for children and other visitors including an interactive exhibit on the economy and ecology of farming and food to supplement our experiential learning programs. A small room with samples of garden tools, photos and diagrams of different phases in compost production and plant life, from seed to produce, farm animal charts and thermometers.

Architect: David Sternberg, Sternberg Benjamin; Structural Engineer: Kelton Finney, Santos & Urrutia; General Contractor: Steven Thompson, Slide Ranch. **Reopening February, 2013**



Campaign for the Commons

This project is made possible by the generous support of:

County of Marin
Sup. Steve Kinsey
Bothin Foundation
S.D. Bechtel, Jr. Foundation

Suzette and Jeff Clarke
Jackie and Barry Hoffner
Caroline Loewy and Gregg Alton
and supporters just like you!

Join the Campaign for the Commons!

Donate online at www.slideranch.org
Or send a check to Slide Ranch,
2025 Shoreline Highway
Muir Beach CA 94965

Slide Ranch is a park partner with the Golden Gate National Recreation Area, a unit of the National Park Service, U.S. Department of the Interior.

